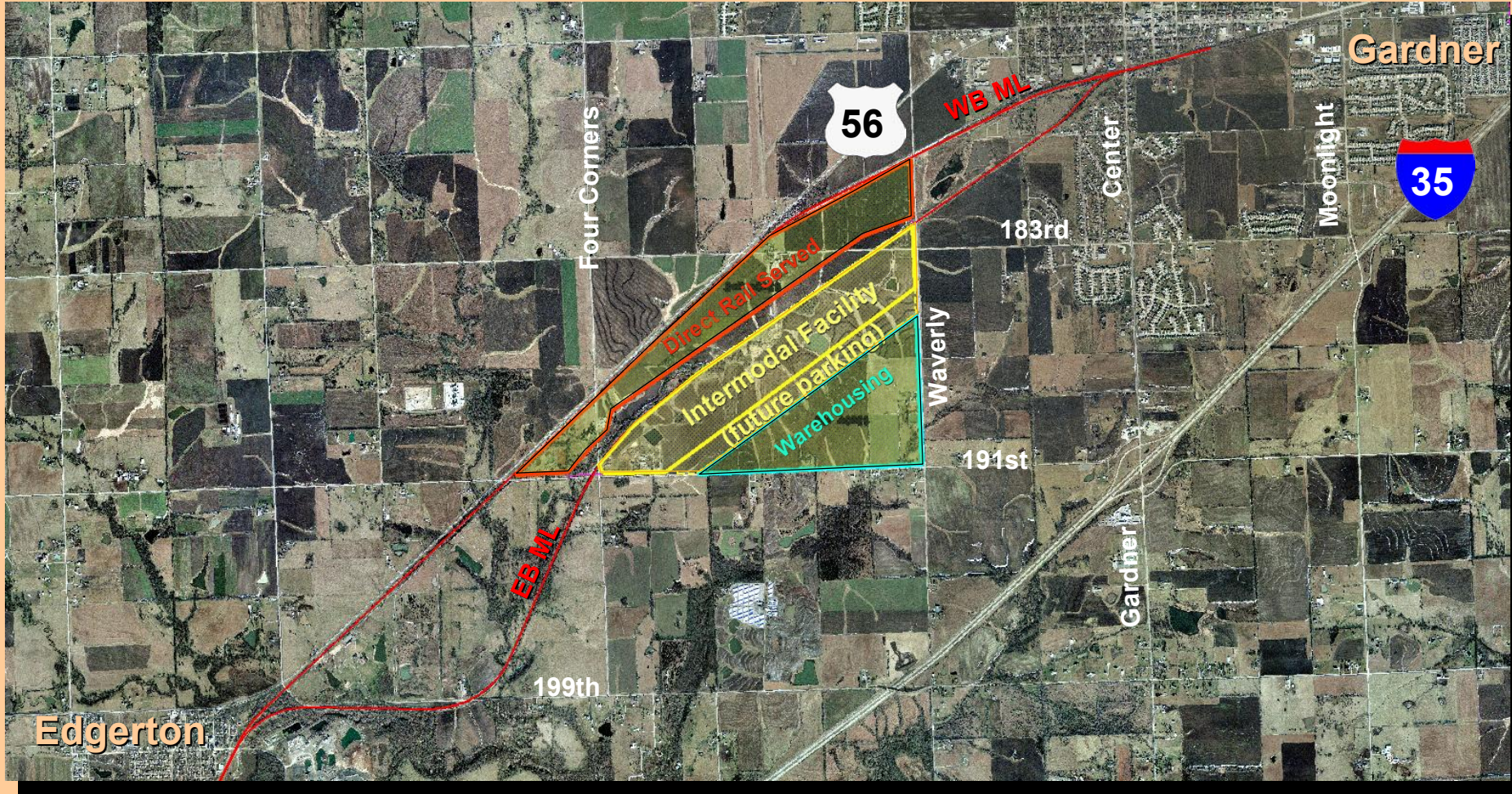


Potential Logistics Park

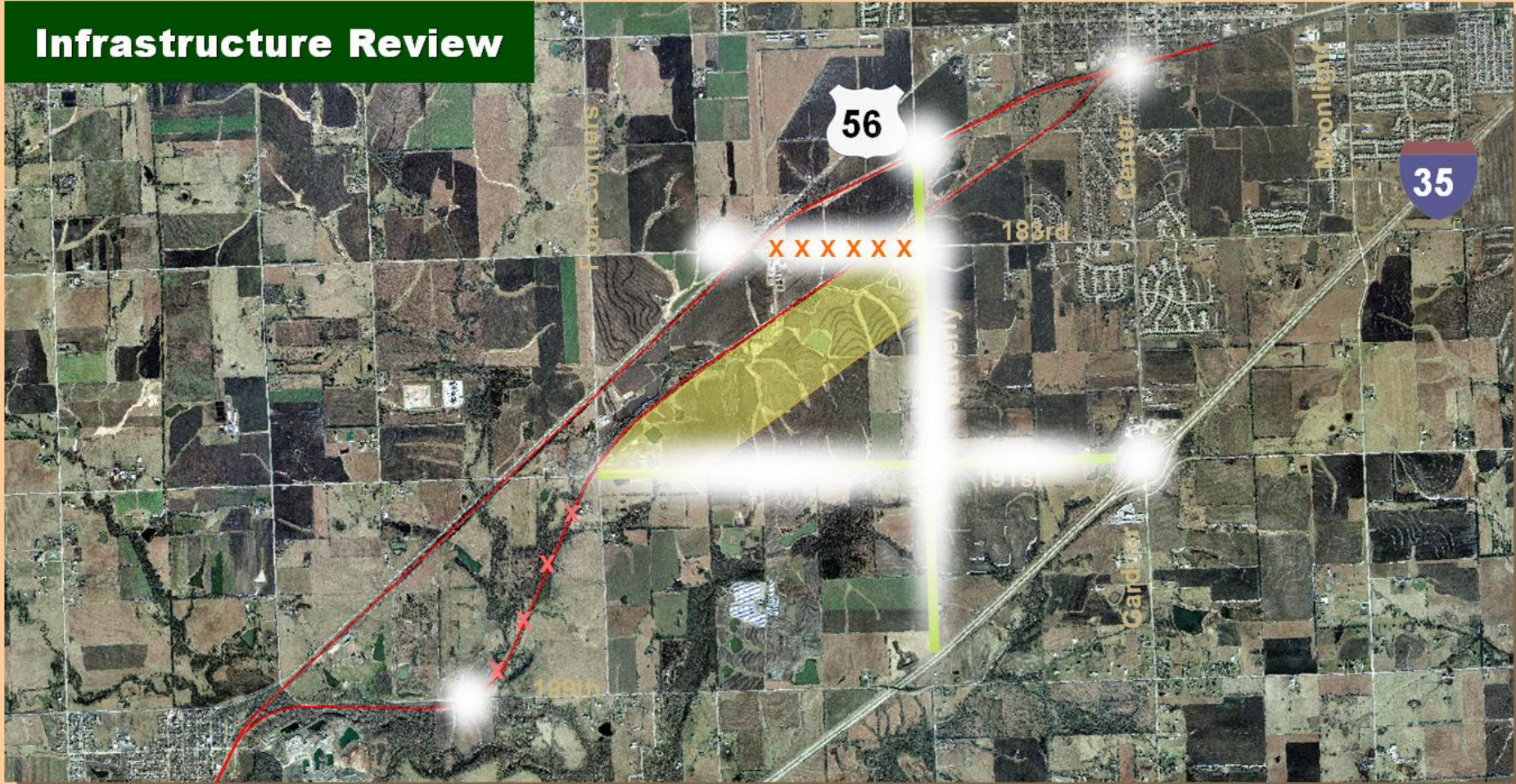


Traffic Study Overview



Traffic Study Overview

Infrastructure Review



Economic Impact Analysis

- ◆ **CH2MHill Lockwood-Greene**
- ◆ **Assumptions**
 - **BNSF Intermodal Facility**
 - **Warehouse Distribution Development**
 - **Conceptual 20-year Time Horizon**
 - **100% within Gardner City Limits**
 - **Employment**
 - **Investments**



Alliance Texas Logistics Park

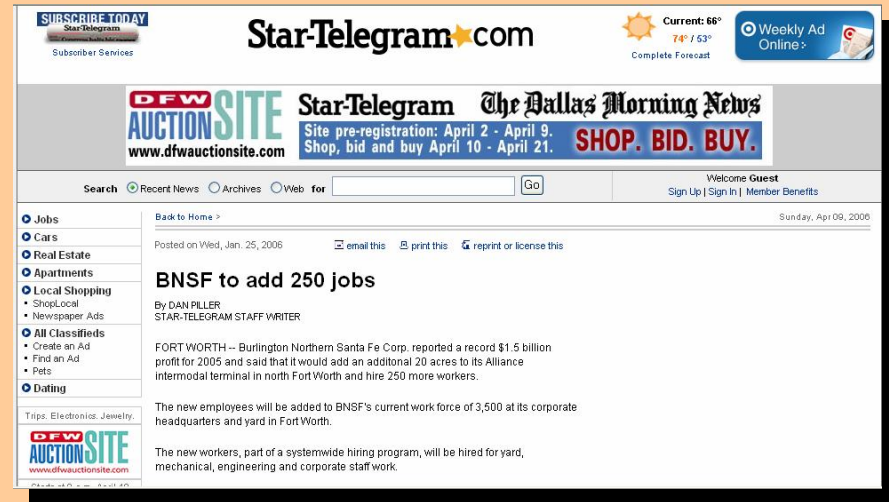
Economic Impact Analysis

◆ Benefits

- Property Tax
- Employment
- Wage
- Sales

◆ Total Fiscal Impact

- Significant Employment Impacts
- Positive Total Fiscal Impacts



The screenshot shows a news article from Star-Telegram.com. The article is titled "BNSF to add 250 jobs" and is dated Sunday, April 09, 2006. The author is Dan Piller, a Star-Telegram staff writer. The article reports that Burlington Northern Santa Fe Corp. reported a record \$1.5 billion profit for 2005 and said that it would add an additional 20 acres to its Alliance intermodal terminal in north Fort Worth and hire 250 more workers. The new employees will be added to BNSF's current work force of 3,500 at its corporate headquarters and yard in Fort Worth. The new workers, part of a systemwide hiring program, will be hired for yard, mechanical, engineering and corporate staff work.

General Timeline

- ◆ **Intermodal Facility**
 - **Estimated Construction Duration – 18 Months**
 - **Parking expansion to follow as needed**
- ◆ **Warehousing (Non-Rail and Rail Served)**
 - **Construction to Follow Intermodal Completion**

Phased Approach

◆ Benefits Of The Phased Approach

- Adequate Planning
 - Coordination With Stakeholders
- Meets The Economic Needs
 - Build To Meet Demand

◆ Phased Developmental Approach

- Phase I
 - Intermodal Facility
 - Warehousing (as needed)
- Phase 2
 - Intermodal Expansion
 - Build-out Of Warehousing



Logistics Park - Chicago

Next Steps

- ◆ **Continuing BNSF Feasibility Analysis**
 - **Developer Selection**
- ◆ **Expanding Stakeholder Engagement**
 - **Intermodal Review Committee**
 - **Infrastructure Needs Identification**
 - **KDOT**
 - **Johnson County**
 - **Gardner**
 - **Others**
- ◆ **Public/Private Partnerships**

BNSF Railway

Potential Logistics Park Gardner City Council and Intermodal Review Committee Briefings

April 10 - 11, 2006

