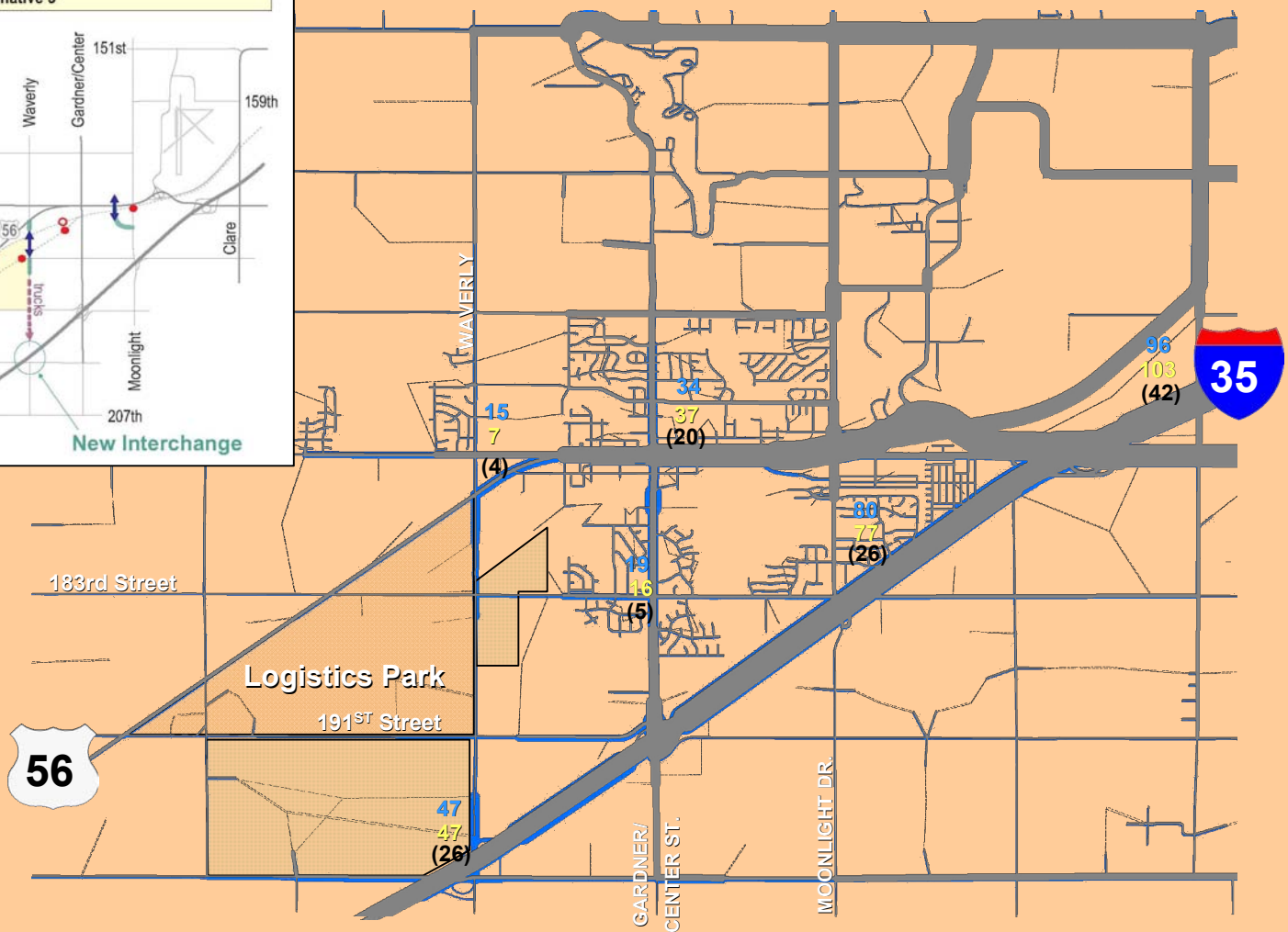


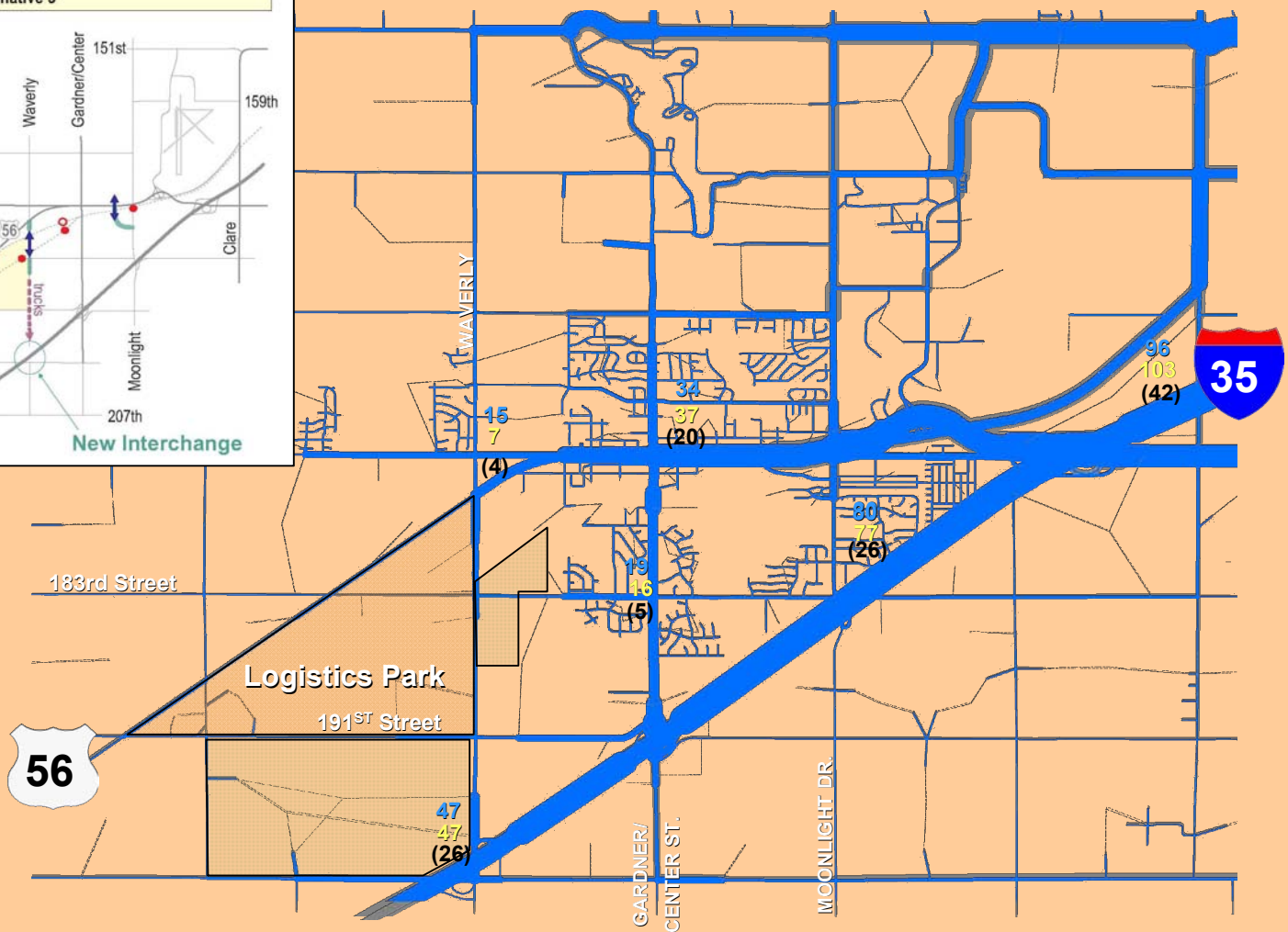
2025 Forecast - Logistics Park and Offsite Warehousing – Alt. 3



Based on the Olathe's Travel Demand Forecasting Model
 Traffic Volumes in 10,000 ADT



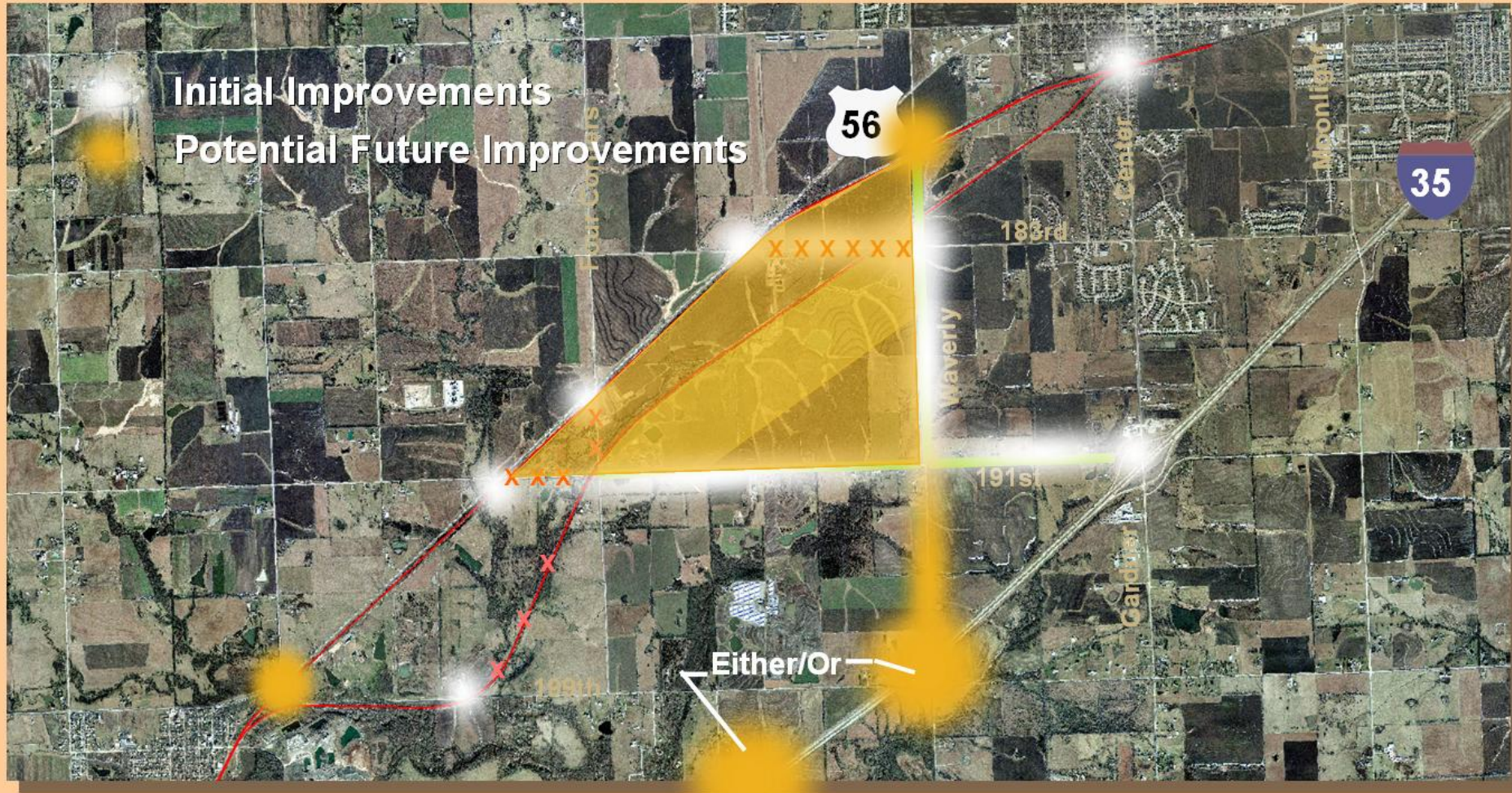
2025 Forecast - Logistics Park and Offsite Warehousing – Alt. 3



Based on the Olathe's Travel Demand Forecasting Model
 Traffic Volumes in 10,000 ADT



Traffic Study Overview



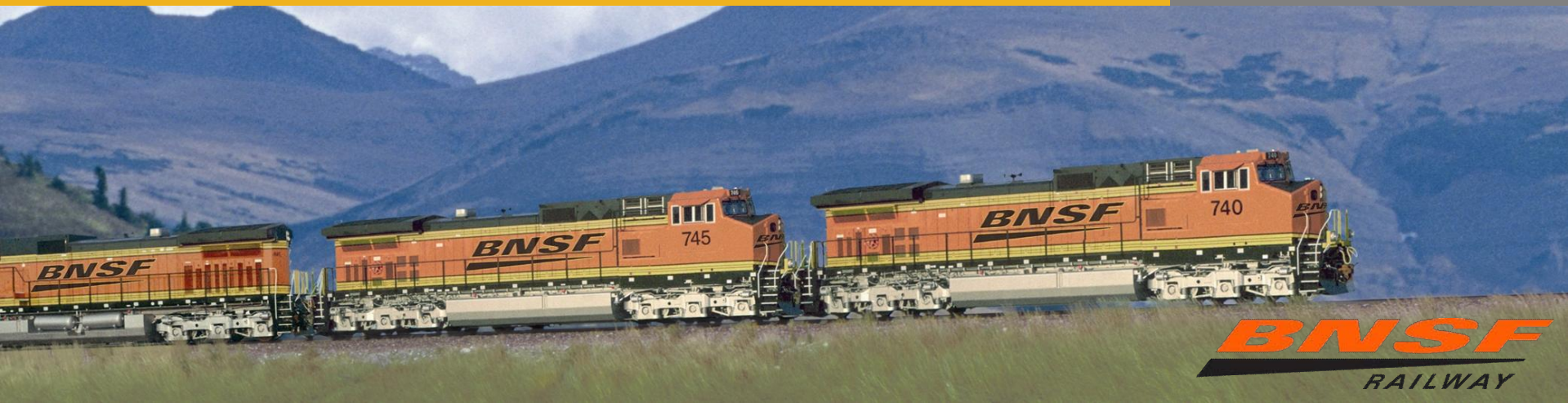
Conclusions

- ◆ **Current Traffic Study Focuses on the Long-term View**
- ◆ **Forecasted Johnson County Population Growth will Drive Infrastructure Changes**
- ◆ **The Logistics Park will Contribute to some Infrastructure Changes**
- ◆ **Logistics Park has Two Elements:**
 - **Intermodal Facility**
 - **Warehousing**
- ◆ **There may be Offsite Warehousing Development**
- ◆ **Infrastructure Improvements will be Required**

BNSF Railway

Potential Logistics Park Traffic Study Review Gardner Intermodal Review Committee

May 9, 2006



Today's Growth Demand

