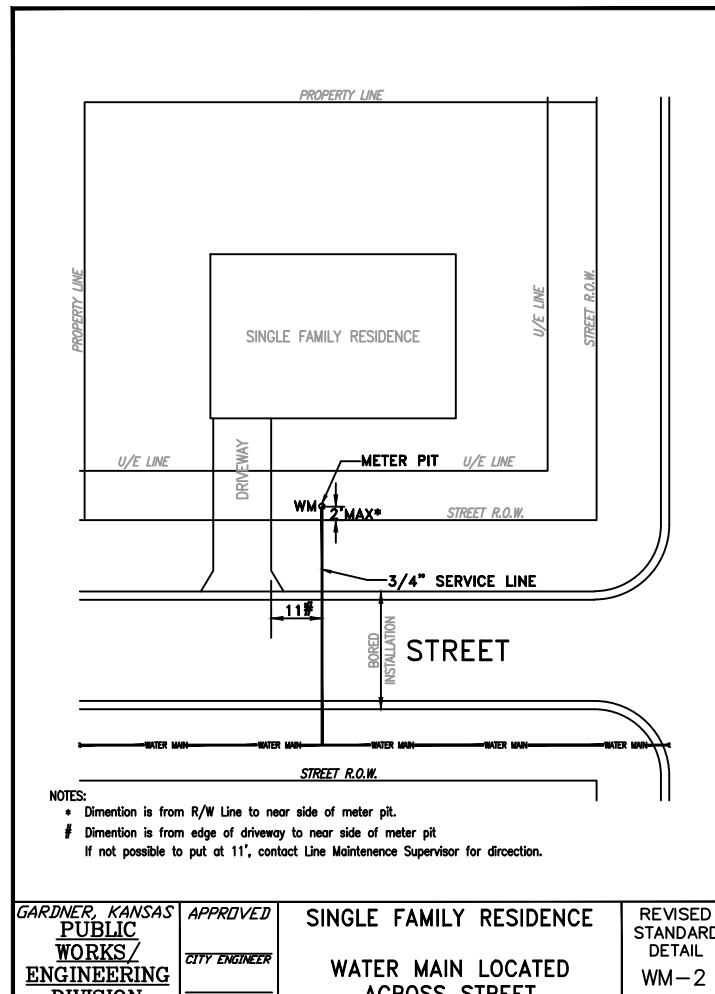
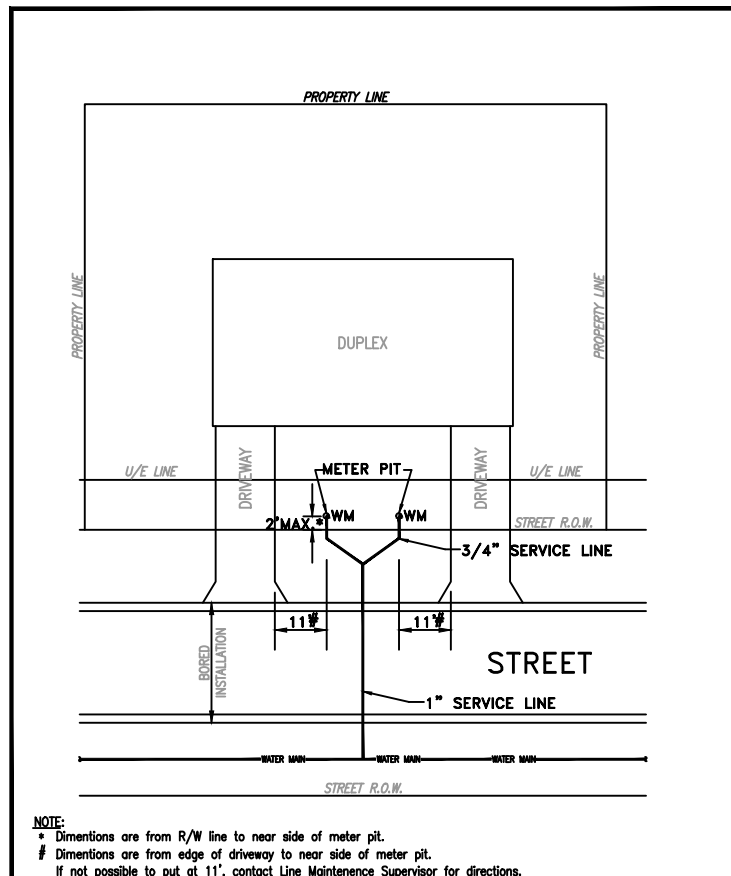


NOTES:
 * Dimensions are from near side of water main to near side of meter pit.
 # Dimensions is from edge of driveway to near side of meter pit.
 If not possible to put at 11', contact Line Maintenance Supervisor for directions.

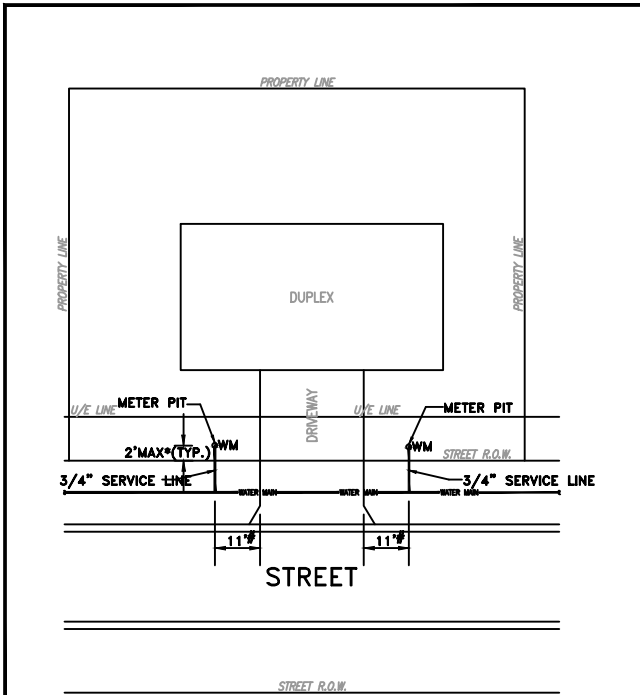
UTILITIES			
GARDNER, KANSAS PUBLIC WORKS/	APPROVED CITY ENGINEER	SINGLE FAMILY RESIDENCE WATER MAIN LOCATED	REVISED STANDARD DETAIL





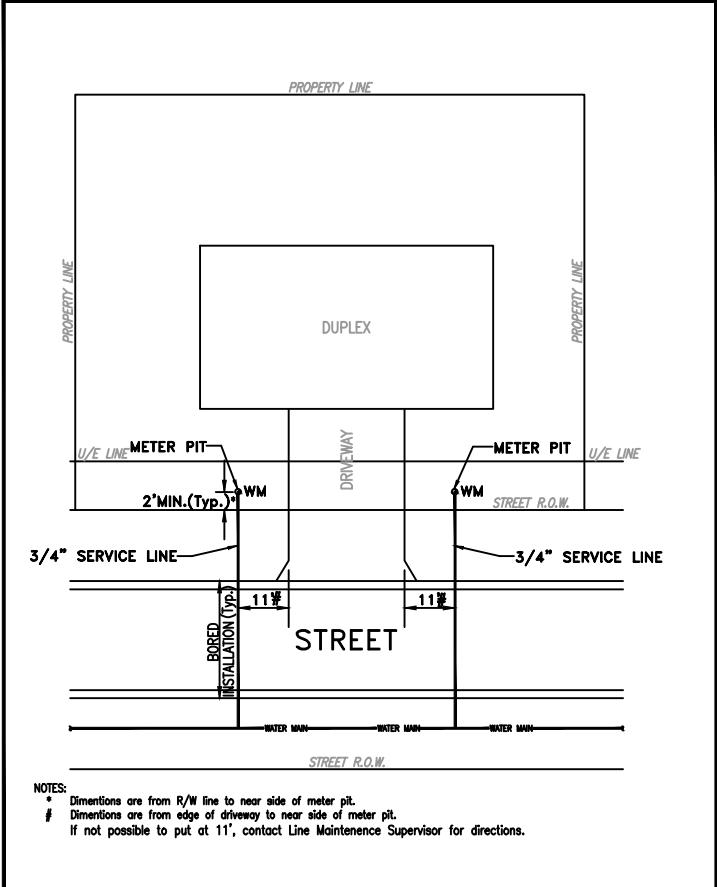
NOTE:

- * Dimensions are from R/W line to near side of meter pit.
 - # Dimensions are from edge of driveway to near side of meter pit.
- If not possible to put at 11', contact Line Maintenance Supervisor for directions.

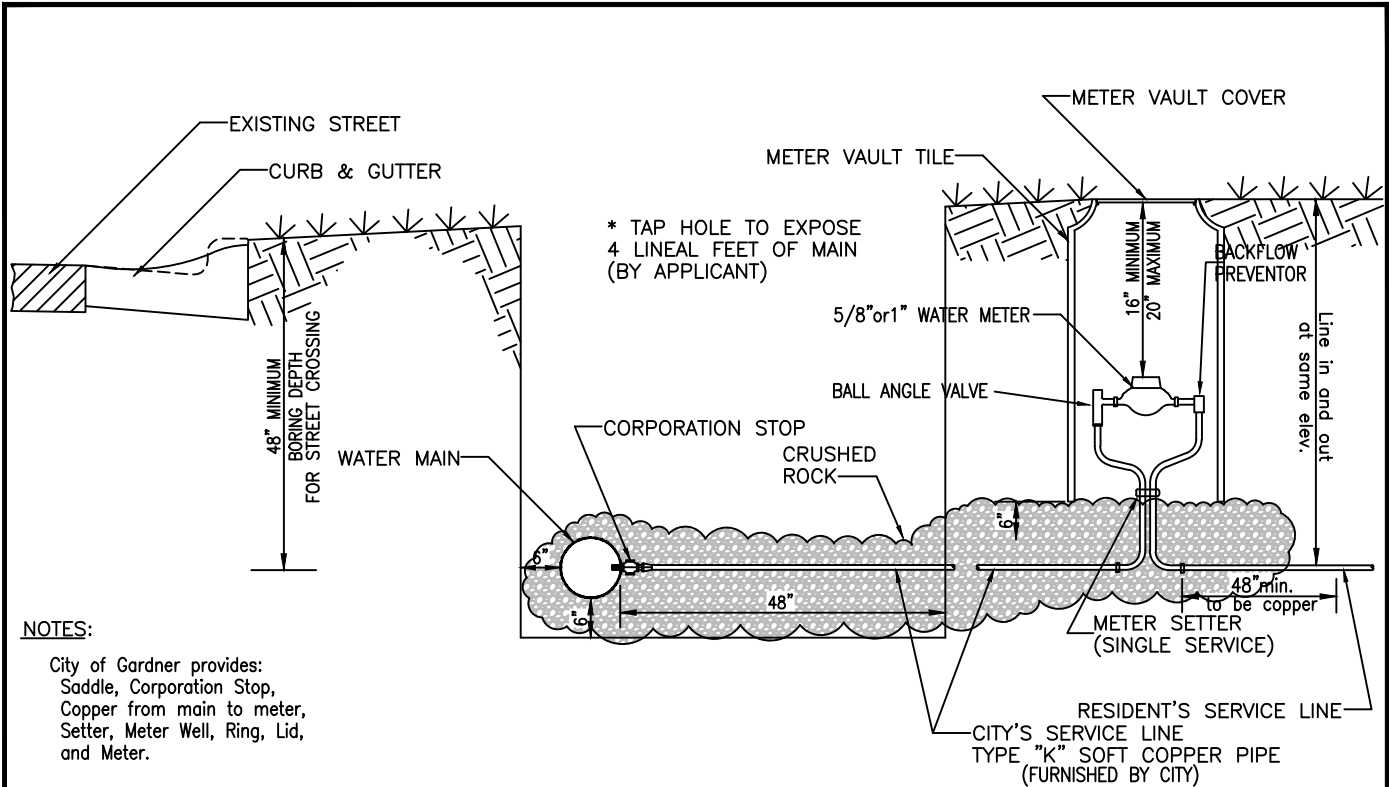


NOTES:
 * Dimensions are from R/W line to near side of meter pit.
 # Dimensions are from edge of driveway to near side of meter pit.
 If not possible to put at 11', contact Line Maintenance Supervisor for directions.

GARDNER, KANSAS PUBLIC WORKS/ ENGINEERING DIVISION	APPROVED CITY ENGINEER JMT	MULTIPLE FAMILY RESIDENCE WATER MAIN LOCATED ON SAME SIDE OF STREET	REVISED STANDARD DETAIL WM-4
--	--	---	---------------------------------------



NOTES:
 * Dimensions are from R/W line to near side of meter pit.
 # Dimensions are from edge of driveway to near side of meter pit.
 If not possible to put at 11', contact Line Maintenance Supervisor for directions.

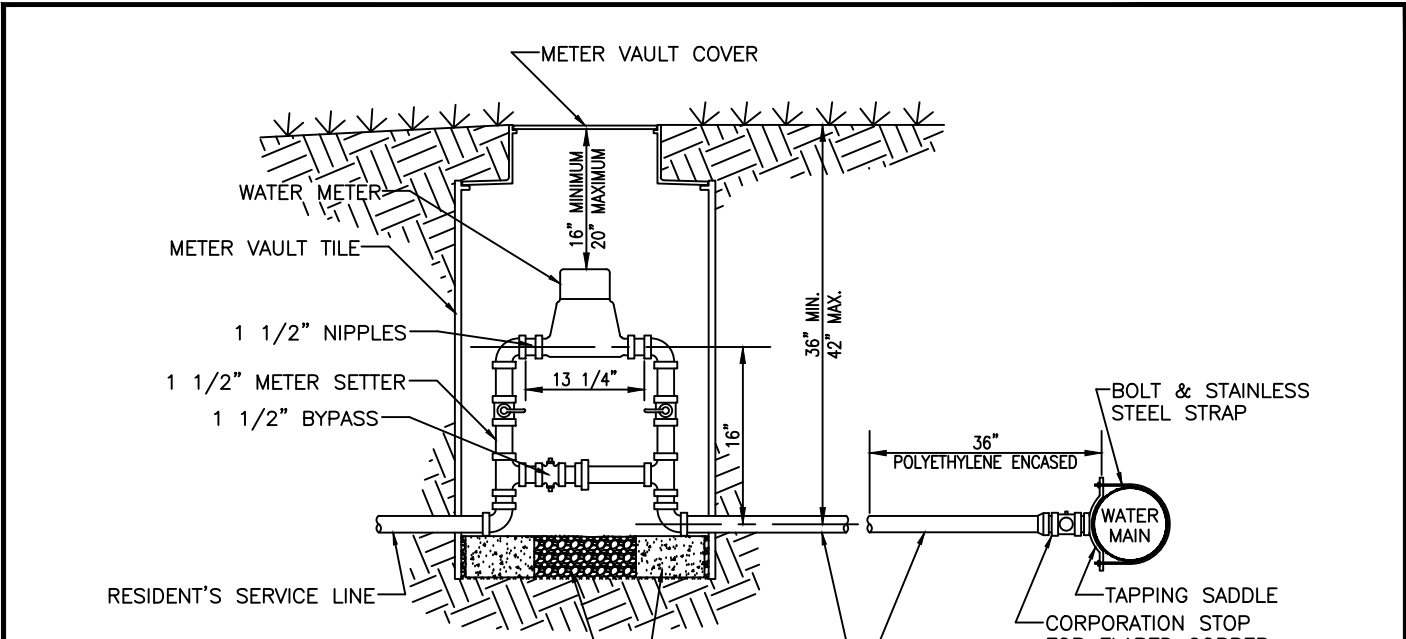


NOTES:
 City of Gardner provides:
 Saddle, Corporation Stop,
 Copper from main to meter,
 Setter, Meter Well, Ring, Lid,
 and Meter.

GARDNER, KANSAS PUBLIC WORKS/ ENGINEERING	APPROVED <hr/> CITY ENGINEER
---	---------------------------------

**5/8" and 1" SINGLE
 WATER SERVICE
 INSTALLATION**

REVISED
 STANDARD
 DETAIL
 WM-6



NOTES:

CONTRACTOR SHALL REPAIR ANY DAMAGE TO POLYETHYLENE ENCASEMENT ON WATER MAIN PRIOR TO BACKFILLING OF TRENCH.

CONTRACTOR SHALL WRAP THE COPPER SERVICE LINE WITHIN THREE (3) FEET OF THE WATER MAIN WITH POLYETHYLENE ENCASEMENT.

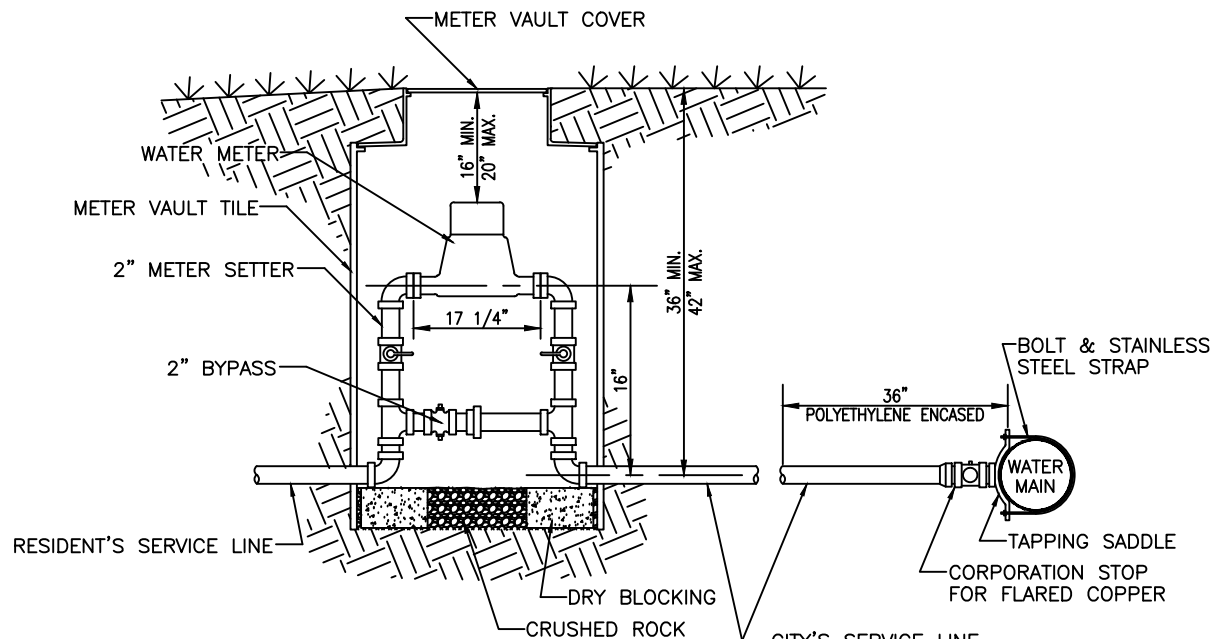
FURNISHED BY THE CITY OF GARDNER WATER/WASTEWATER DIVISION:

- *TAP
- *WATER METER

GARDNER, KANSAS MUNICIPAL SERVICES/ UTILITIES DIVISION	APPROVED D.E.C. UTILITIES ENGINEER 7-03-06
---	---

**1 1/2" SINGLE
 WATER SERVICE
 INSTALLATION**

STANDARD
 DETAIL
 WM-7



NOTES:

CONTRACTOR SHALL REPAIR ANY DAMAGE TO POLYETHYLENE ENCASEMENT ON WATER MAIN PRIOR TO BACKFILLING OF TRENCH.

CONTRACTOR SHALL WRAP THE COPPER SERVICE LINE WITHIN THREE (3) FEET OF THE WATER MAIN WITH POLYETHYLENE ENCASEMENT.

FURNISHED BY THE CITY OF GARDNER WATER/WASTEWATER DIVISION:

- *TAP
- *WATER METER

GARDNER, KANSAS
MUNICIPAL SERVICES/UTILITIES

APPROVED
 D.E.C.
 UTILITIES ENGINEER

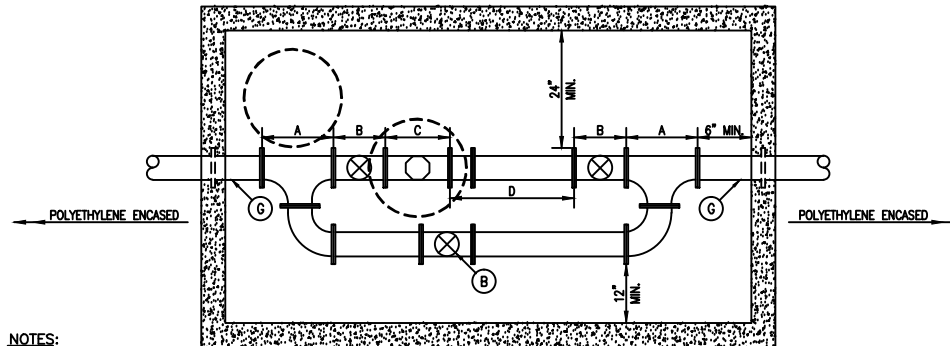
2" SINGLE WATER SERVICE INSTALLATION

STANDARD
 DETAIL
 WM - 8

LEGEND

- A. - FLANGED TEE
- B. - RESILIENT SEATED GATE VALVE
- C. - WATER METER
- D. - FLANGED ADAPTER & PLAIN END BY FLANGED END PIPE
- E. - METER LID
- F. - MANHOLE
- G. - WALL PIPE
- H. - PIPE SUPPORTS

METER SIZE	MINIMUM LAY LENGTH COMBINATION OF C & D.
3"	48"
4"	50"
6"	62"



NOTES:

ALL WATER LINE PIPING SHALL BE POLYETHYLENE ENCASED, EXCEPT PIPING IN VAULT.

PLAN VIEW

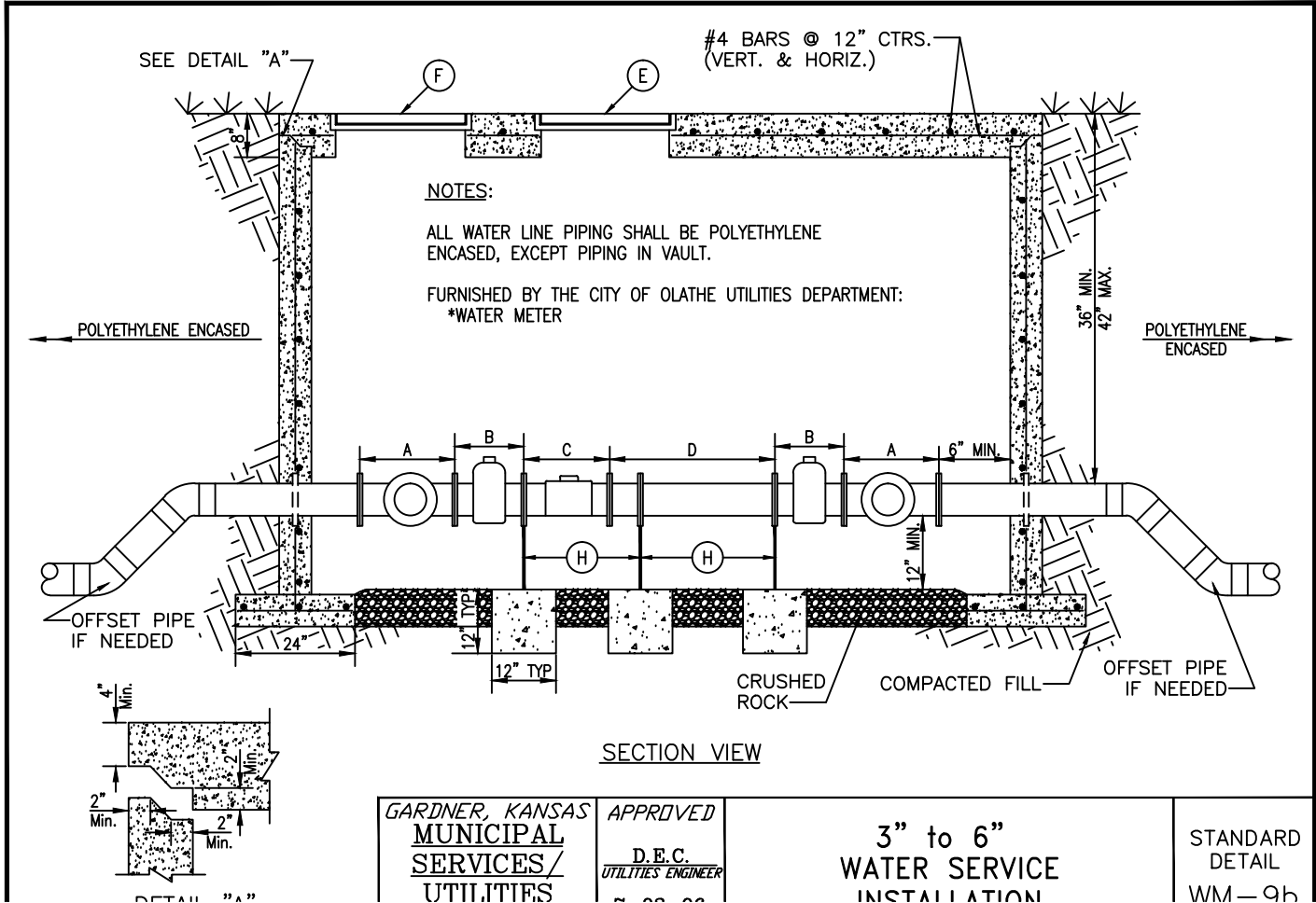
FURNISHED BY THE CITY OF GARDNER WATER/WASTEWATER DIVISION:
*WATER METER

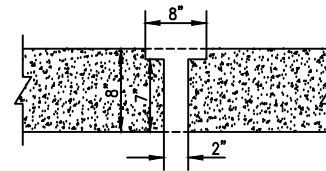
GARDNER, KANSAS
MUNICIPAL SERVICES/ UTILITIES DIVISION

APPROVED
D.E.C.
UTILITIES ENGINEER
7-03-06
DATE

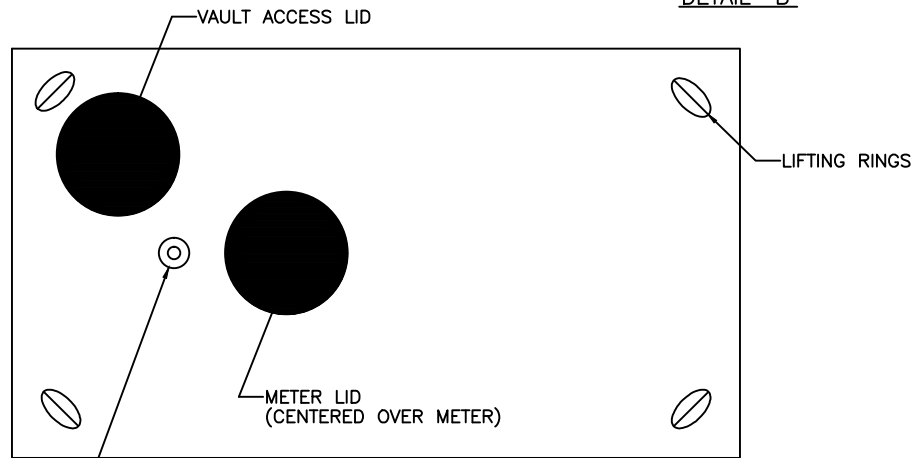
3" to 6"
WATER SERVICE
INSTALLATION

STANDARD
DETAIL
WM-9c





DETAIL "B"



VAULT TOP - PLAN VIEW

RECESSED
(REMOTE READ SYSTEM)
SEE DETAIL "B"

GARDNER, KANSAS
MUNICIPAL
SERVICES/
UTILITIES
DIVISION

APPROVED
D.E.C.
UTILITIES ENGINEER
7-03-06
DATE

3" to 6"
WATER SERVICE
INSTALLATION

STANDARD
DETAIL
WM-9c